

SPECIFICATIONS

ELECTRICAL

FREQUENCY RANGE _____ 2 - 2.4 GHz
 VSWR _____ 1.5:1 MAX.
 INPUT PORT
 AVG. POWER (FWD/REV) _____ 2 WATTS
 DERATES LINEARLY TO 10% @ 85°C
 IMPEDANCE _____ 50 OHMS
 COUPLING _____ 6dB ± 0.5 dB
 INSERTION LOSS _____ 0.3 dB
 DIRECTIVITY _____ 20 dB MIN
 OPERATING TEMP RANGE _____ -54°C TO +125°C

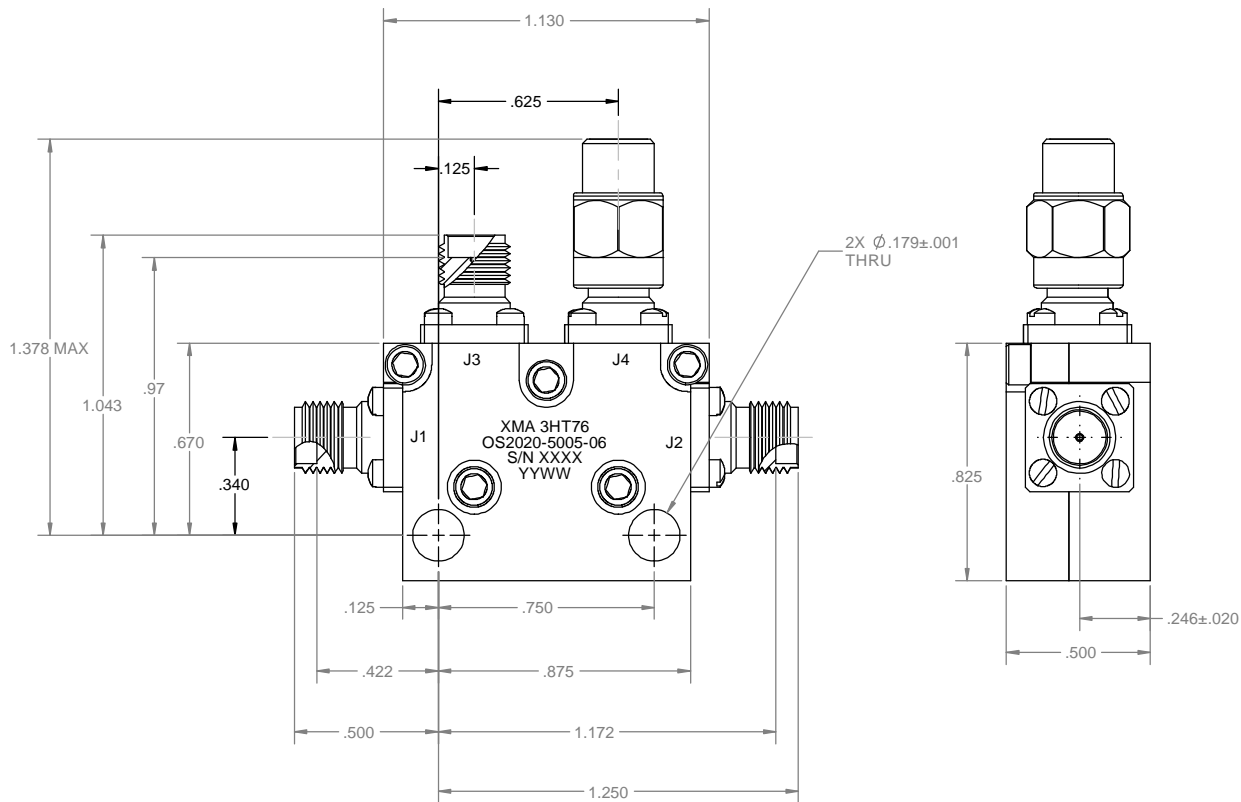
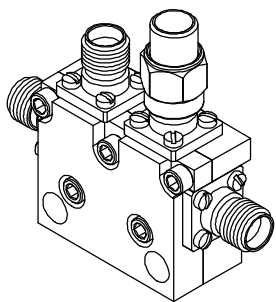
MECHANICAL

SMA CONNECTORS - FEMALE/JACK (IAW MIL-PRF-39012 & MIL-STD-348)
 CONTACTS _____ GOLD PLATED BeCu
 CONNECTOR HOUSING _____ PASSIVATED STAINLESS STEEL
 CIRCUIT CASE _____ ALUMINUM ALLOY W/ CHEMICAL CONVERSION COAT, RoHS COMPLIANT
 INSULATORS _____ ULTEM
 WEIGHT _____ 35 GRAMS MAX

RoHS COMPLIANT DEVICE

MARKING

PART LOOKS LIKE PRODUCT IMAGE SHOWN.
 PART MARKING ORIENTATION AND FORMAT AS SHOWN.
 MARKING TO BE AS LARGE AS POSSIBLE BE, CLEAR, READABLE.
 YYWW EQUALS DATE CODE



REVISIONS				
REV	DESCRIPTION	ECO #	DATE	APPROVED
X1	PRELIMINARY RELEASE	20-NP031	9/17/20	JW
X2	ADDED DIMS; 1.130 & .875	20-NP031	9/17/20	JW

QTY.	PART NUMBER	DESCRIPTION	ITEM NO.
X	OS2020-5005-06	COUPLER, SMA-f, 2-2.4 GHz	
1	TA-OS2020-5005-06U	ASSEMBLY, COUPLER, SMA-f, 2-2.4 GHz, UNMARKED	1

DRAWING PRACTICES PER ANSI Y-14.5
 MIL-STD-100 & 1000
 DIMENSIONS ARE IN INCHES AND
 APPLY BEFORE/AFTER PROCESSING
 SURFACE ROUGHNESS 63
 FINISH:
 SEE NOTE
 MATERIAL:
 SEE NOTE
 NOTE:
 THIS DRAWING INCORPORATES
 THIRD ANGLE PROJECTION.
 INTERPRET IAW ANSI Y14.5-1982

UNLESS OTHERWISE SPECIFIED
 TOLERANCES IN:
 DECIMALS INCH (MM)
 .X" .05" [1.27]
 .XX" .03" [.76]
 .XXX" .010" [.25]
 ANGLES ±0°30'
 REMOVE ALL BURRS/SHARP W/
 BREAK / R OF .003" TO .0005"
 UNLESS OTHERWISE NOTED
 DIAS CONCENTRIC <.003 T.I.R.
 DO NOT SCALE PRINT

DRAWN DATE
 MCCORMICK 9/17/20
 CHECKED DATE
 MCCORMICK 9/17/20
 ENG APPR. DATE
 JW 9/17/20
 THESE DRAWINGS AND
 SPECIFICATIONS ARE THE PROPERTY
 OF XMA CORP. OR OMNI SPECTRA
 AND SHALL NOT BE REPRODUCED,
 COPIED NOR USED IN WHOLE OR IN
 PART AS A BASIS FOR THE
 MANUFACTURE OR SALE OF OTHER
 ITEMS WITHOUT THE EXPRESS
 WRITTEN PERMISSION OF XMA CORP.

Phone: 603-222-2256 Fax: 603-222-2259
 7 Perimeter Road, Manchester, NH 03103
 TITLE
COUPLER SMA-f/f 6dB
 SIZE CAGE CODE DRAWING NUMBER REV
 C 3HT76 OS2020-5005-06 X2
 SCALE PLATED AREA SQ. IN SHEET 1 OF 1
 TEMPLATE REV A