

SPECIFICATIONS

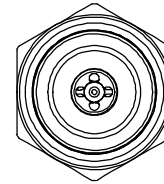
ELECTRICAL

FREQUENCY RANGE \_\_\_\_\_ 10MHz - 50GHz  
 VSWR  
 10MHz - 50 GHz \_\_\_\_\_ <1.65:1  
 INSERTION LOSS  
 10MHz - 40GHz \_\_\_\_\_ 1 dB MAX  
 40GHz - 50GHz \_\_\_\_\_ 1.25 dB MAX  
 VOLTAGE \_\_\_\_\_ 100 VOLTS MAX (INNER ONLY)  
 IMPEDANCE \_\_\_\_\_ 50 OHMS  
 OPERATING TEMP RANGE \_\_\_\_\_ -35°C TO +85°C

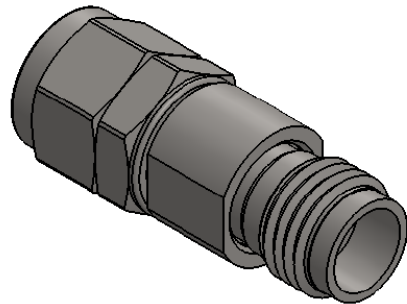
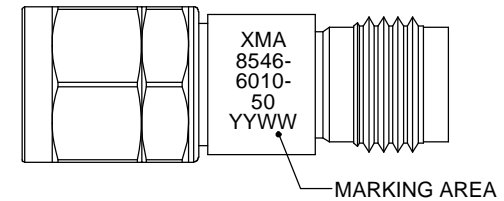
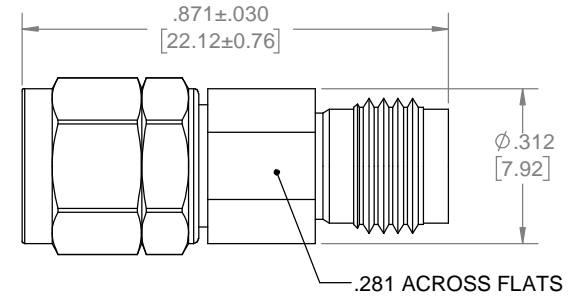
MECHANICAL

CENTER CONDUCTOR \_\_\_\_\_ BERYLLIUM COPPER  
 GOLD PLATE IAW MIL-PRF-39012  
 HOUSING \_\_\_\_\_ STAINLESS STEEL PER  
 ASTM A484 & A582, CLASS 303, COND. A.  
 PASSIVATED PER ASTM A380  
 DIELECTRIC \_\_\_\_\_ TEFLON  
 MARKING \_\_\_\_\_

PART LOOKS LIKE PRODUCT IMAGE ABOVE.  
 PART MARKING ORIENTATION AND FORMAT AS SHOWN.  
 MARKING TO BE AS LARGE AS POSSIBLE, CLEAR, READABLE.  
 YYWW EQUALS DATE CODE.



REVISIONS				
REV	DESCRIPTION	ECO #	DATE	APPROVED
A	INITIAL RELEASE	15-017	1/20/15	T.KUHN
B	ADDED "XMA" TO MARKING	17-077	5/30/17	T.KUHN



QTY.	PART NUMBER	DESCRIPTION	ITEM NO.
X	8546-6010-50	DC BLOCK, 2.4mm-m/f, 10MHz-50GHz, 100V	
1	TA-8546-6010-50U	ASSEMBLY, DC BLOCK, 2.4mm-m/f, 10MHz-50GHz, 100V, UNMARKED	1

DRAWING PRACTICES PER ANSI-Y-14.5 MIL-STD-100 & 1000  
 DIMENSIONS ARE IN INCHES AND APPLY BEFORE / AFTER PROCESSING  
 SURFACE ROUGHNESS  $\mu$ INCHES **63**  
 FINISH:  
 SEE NOTES  
 MATERIAL:  
 SEE NOTES  
 NOTE:  
 THIS DRAWING INCORPORATES THIRD ANGLE PROJECTION.  
 INTERPRET IAW ANSI Y14.5-1982

UNLESS OTHERWISE SPECIFIED TOLERANCES IN:  
 DECIMALS INCH [MM]  
 .X" .05" [1.27]  
 .XX" .03" [.76]  
 .XXX" .010" [.25]  
 ANGLES  $\pm 0^{\circ}30'$   
 REMOVE ALL BURRS/SHARP W/ BREAK / R OF .003" TO .0005" UNLESS OTHERWISE NOTED  
 DIAS CONCENTRIC <.003 T.I.R.  
 DO NOT SCALE PRINT

DRAWN DATE  
**MCCORMICK** 1/20/15  
 CHECKED DATE  
**MCCORMICK** 1/20/15  
 ENG. APPR. DATE  
**T.KUHN** 1/20/15

THESE DRAWINGS AND SPECIFICATIONS ARE THE PROPERTY OF XMA CORP. OR OMNI SPECTRA AND SHALL NOT BE REPRODUCED, COPIED NOR USED - IN WHOLE OR IN PART - AS A BASIS FOR THE MANUFACTURE OR SALE OF OTHER ITEMS WITHOUT THE EXPRESS WRITTEN PERMISSION OF XMA CORP.

Phone: 603-222-2256 Fax: 603-222-2259  
 150 Dow Street, Manchester, NH 03101  
 TITLE  
**DC BLOCK, 2.4mm-m/f, 10MHz-50GHz, 100V**

SIZE <b>B</b>	CAGE CODE <b>3HT76</b>	DRAWING NUMBER <b>8546-6010-50</b>	REV <b>B</b>
SCALE	PLATED AREA SQ. IN	SHEET <b>1</b> OF <b>1</b>	