

ELECTRICAL

SPECIFICATIONS

FREQUENCY RANGE _____ DC - 65 GHz
 STANDARD dB VALUES _____ SEE CHART
 ATTENUATION ACCURACY _____ DC - 26.5 GHz 26.5 - 40 GHz 40 - 60 GHz 60 - 65 GHz
 1-9 dB _____ ±0.75 dB ±1.0 dB ±1.5 dB ±1.5 dB
 10 & 12 dB _____ ±0.75 dB ±1.25 dB ±1.5 dB ±1.75 dB
 15 dB _____ ±1.0 dB ±1.25 dB ±2.0 dB ±2.5 dB

VSWR _____ DC-26.5 GHz 26.5 - 40 GHz 40 - 65 GHz
 <1.35 <1.55 <1.65

INPUT POWER (AVG. MAX.) _____ 1 WATT @25°C SEE TABLE
 DERATES LINEARLY TO 10% AT +100°C from + 25°

IMPEDANCE _____ 50 OHMS (NOM.)
 OPERATING/STORAGE TEMP. RANGE _____ -55 TO +100°C
 MATING TORQUE _____ 7-10 IN/LBS (79-113 Ncm)

MATERIAL

HOUSING _____ STAINLESS STEEL IAW ASTM-A484 & ASTM-A582, ALLOY 303, COND A
 CONTACT _____ BERYLLIUM COPPER
 DIELECTRIC _____ TEFLON

FINISH

HOUSING _____ PASSIVATED STAINLESS STEEL
 CONDUCTOR _____ GOLD PLATED IAW MIL-PRF-39012

RoHS COMPLIANT DEVICE

MARKING

PART LOOKS LIKE PRODUCT IMAGE ABOVE.
 PART MARKING ORIENTATION AND FORMAT AS SHOWN (CURVED SURFACE).
 dB = SEE TABLE FOR MARKED dB VALUE.
 MARKING TO BE AS LARGE AS POSSIBLE.
 YYWW EQUALS DATE CODE

REVISIONS				
REV	DESCRIPTION	ECO #	DATE	APPROVED
X1	PRELIMINARY RELEASE	19-ER008	2/13/19	T.KUHN
X2	ADDED THALES P/N & MATING TORQUE	19-ER008	4/10/19	T.KUHN

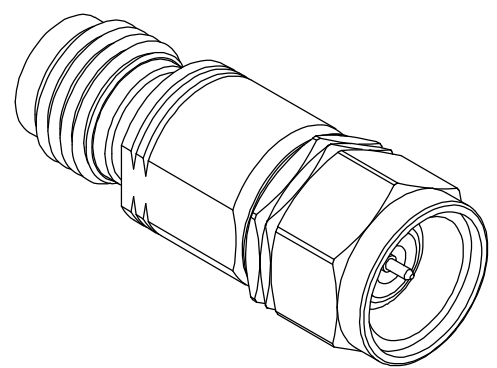
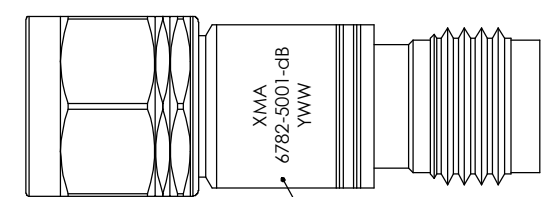
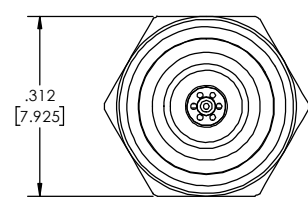
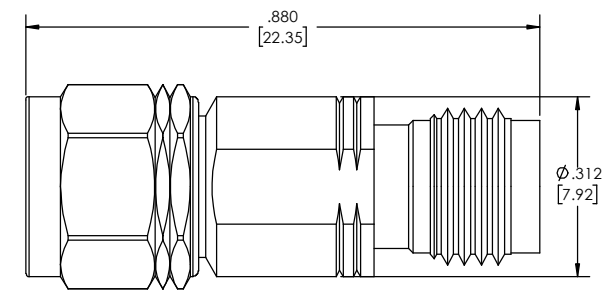


CHART A		
-dB	MARKED dB VALUE	THALES P/N
01	01	10618286
02	02	10618295
03	03	10618297
04	04	10618299
05	05	10618301
06	06	10618303
07	07	10618305
08	08	10618307
09	09	10618309
10	10	10618311
12	12	TBD
15	15	TBD

QTY.	PART NUMBER	DESCRIPTION	ITEM NO.
X	6782-5001-dB	ATTENUATOR, 1.85mm-m/f, DC-65 GHz, 1W	
1	TA-6782-5001-dBU	ASSEMBLY, ATTENUATOR, 1.85mm-m/f, DC-65 GHz, 1W, UNMARKED	1

<small>DRAWING PRACTICES PER ANSI Y-14.5 DD-STD-100 & 100B DIMENSIONS ARE IN INCHES AND APPLY BEFORE/AFTER PROCESSING</small> SURFACE FINISH: 63 FINISH:	<small>UNLESS OTHERWISE SPECIFIED TOLERANCES IN: DECIMALS INCH (MM) .X" .05" [1.27] .XX" .03" [.76] .XXX" .01" [.25]</small>	DRAWN: MCCORMICK 2/13/19 DATE: 2/13/19 CHECKED: MCCORMICK 2/13/19 DATE: 2/13/19 ENG APPR: T.KUHN 2/13/19	
		THESE DRAWINGS AND SPECIFICATIONS ARE THE PROPERTY OF XMA CORP. OR OMNI SPECTRA AND SHALL NOT BE REPRODUCED, COPIED NOR USED IN WHOLE OR IN PART AS A BASIS FOR THE MANUFACTURE OR SALE OF OTHER ITEMS WITHOUT THE EXPRESS WRITTEN PERMISSION OF XMA CORP.	
<small>MATERIAL:</small> REMOVE ALL BURRS/SHARP W/ BREAK / R OF .003" TO .0005" UNLESS OTHERWISE NOTED DIAS CONCENTRIC <.003 T.I.R. NOTE: THIS DRAWING INCORPORATES THIRD ANGLE PROJECTION.	<small>ANGLES ±0°30'</small> REMOVE ALL BURRS/SHARP W/ BREAK / R OF .003" TO .0005" UNLESS OTHERWISE NOTED DIAS CONCENTRIC <.003 T.I.R.	TITLE: ATTENUATOR, 1.85mm-m/f, DC-65 GHz, 1W PHONE: 603-222-2256 FAX: 603-222-2259 150 Dow Street, Manchester, NH 03101	SCALE: C CAGE CODE: 3HT76 DRAWING NUMBER: 6782-5001-dB REV: X2
<small>INTERPRET IAW ANSI Y14.5-1982</small>	DO NOT SCALE PRINT	SHEET 1 OF 1	SHEET 1 OF 1