

ELECTRICAL

SPECIFICATIONS

FREQUENCY RANGE: _____ DC - 18GHz
 ATTENUATION: _____ SEE TABLE
 ATTENUATION DEV. TOL.: _____ SEE TABLE
 VSWR (MAX.): (1-40 dB) _____ 1.15:1 (DC - 4 GHz)
 _____ 1.25:1 (4 - 12.4 GHz)
 _____ 1.35:1 (12.4 - 18 GHz)
 POWER (AVG): _____ 5 WATTS
 DERATES LINEARLY FROM 25°C TO 10% @125°C
 (PEAK): _____ 500 WATTS MAX.
 @5 μSEC PULSE WIDTH x 0.25% DUTY CYCLE
 IMPEDANCE(NOM.): _____ 50 OHMS
 OPERATING TEMP _____ -65°C TO 125°C

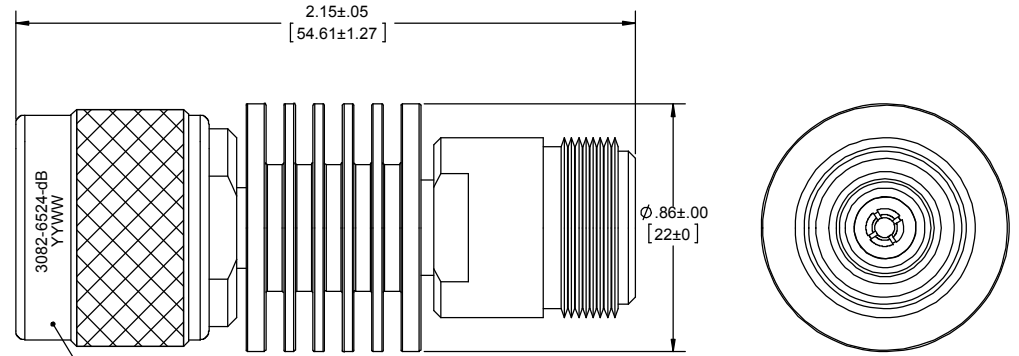
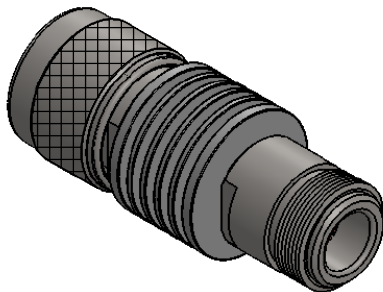
MECHANICAL

OUTER CONDUCTOR _____ STAINLESS STEEL PER ASTM A484 & A582, CLASS 303, COND. A.PASSIVATED PER ASTM A380.
 CENTER CONDUCTOR _____ BeCu PER QQ-C-530, ASTM B196, ASTM-B197 ALLOYS C17200 OR C17300 GOLD PLATE PER ASTM-B488
 HOUSING/HEAT SINK _____ ALUMINUM (May be one of several QQ-A-XXX or ASTM standards) BLACK ANODIZE
 DIELECTRIC _____ TEFLON PER ASTM D1710
 RESISTOR SUBSTRATE _____ AIN OR ALUMINA CERAMIC, PROPRIETARY THIN FILM HYBRID W/ PROTECTIVE COATING
 MATERIALS AND FINISH (COMPLY WITH MIL-DTL-3933 AND MIL-PRF-39012):

ENVIRONMENTAL CAPABILITIES AND DESIGN COMPLY WITH MIL-DTL-3933 FOR CLASS IV DEVICES (SOME PARAMETERS COMPLY WITH TYPE III OR BETTER).

MARKING

PART LOOKS LIKE PRODUCT IMAGE ABOVE.
 PART MARKING ORIENTATION AND FORMAT AS SHOWN.
 LASER MARKING TO BE AS LARGE AS POSSIBLE BE, CLEAR, READABLE, AND A WHITE COLOR.
 "dB" dB VALUE TO BE TWO DIGIT NUMBER AS SPECIFIED ON WORK ORDER.
 YYWW EQUALS DATECODE.



REVISIONS				
REV	DESCRIPTION	ECO #	DATE	APPROVED
B	UPDATED TO NEW FORMAT	13-094	4-18-13	T.KUHN
C	ADDED MARKING	15-184	6/16/15	T.KUHN
D	MOVED MARKING	15-255	8/25/14	T.KUHN
E	ADDED OPERATING TEMP	16-021	2/1/16	T.KUHN

DASH NO	NOM dB	MAX DEV.
-01	1	±0.3
-02	2	±0.3
-03	3	±0.3
-04	4	±0.3
-05	5	±0.3
-06	6	±0.3
-07	7	±0.5
-08	8	±0.5
-09	9	±0.5
-10	10	±0.5
-11	11	±0.5
-12	12	±0.5
-15	15	±0.5
-20	20	±0.5
-30	30	±0.75
-40	40	±1.25

QTY.	PART NUMBER	DESCRIPTION	ITEM NO.
X	3082-6524-dB	ATTENUATOR, TYPE N, M-F	
1	TA-3082-6524-dBU	ASSEMBLY, ATTENUATOR, TYPE N, M-F, UNMARKED	1

DRAWING PRACTICES PER ANSI Y-14.5 DIMENSIONS ARE IN INCHES AND APPLY BEFORE/AFTER PROCESSING SURFACE FINISH: 63 FINISH:	UNLESS OTHERWISE SPECIFIED TOLERANCES IN: DECIMALS INCH [MM] .X" .05" [1.27] .XX" .03" [.76] .XXX" .010" [.25]	DRAWN SAUNDERS 11/2/10 CHECKED T.KUHN 11/2/10 ENG APPR. SAUNDERS 11/2/10 DATE 11/2/10
MATERIAL: SEE NOTE NOTE: THIS DRAWING INCORPORATES THIRD ANGLE PROJECTION.	ANGLES ±0°30' REMOVE ALL BURRS/SHARP W/ BREAK / R OF .003" TO .0005" UNLESS OTHERWISE NOTED DIAS CONCENTRIC <.003 T.I.F.	THESE DRAWINGS AND SPECIFICATIONS ARE THE PROPERTY OF XMA CORP. OR OMNI SPECTRA AND SHALL NOT BE REPRODUCED, COPIED NOR USED IN WHOLE OR IN PART AS A BASIS FOR THE MANUFACTURE OR SALE OF OTHER ITEMS WITHOUT THE EXPRESS WRITTEN PERMISSION OF XMA CORP.
INTERPRET LAW ANSI Y14.5-1982	DO NOT SCALE PRINT	

Phone: 603-222-2256 Fax: 603-222-2259
 150 Dow Street, Manchester, NH 03103

ATTENUATOR, N-m/f, DC-18 GHz, 5W

SIZE	CAGE CODE	DRAWING NUMBER	REV
C	3HT76	3082-6524-dB	E

SCALE: PLATED AREA 50 IN SHEET 1 OF 1