

SPECIFICATIONS

ELECTRICAL

FREQUENCY RANGE \_\_\_\_\_ DC- 18 GHz  
 VSWR \_\_\_\_\_ 1.2:1 MAX  
 RF POWER \_\_\_\_\_ 1 WATT CW MAX  
 IMPEDANCE \_\_\_\_\_ 50 OHMS  
 OPERATING TEMP RANGE \_\_\_\_\_ -65°C TO +125°C

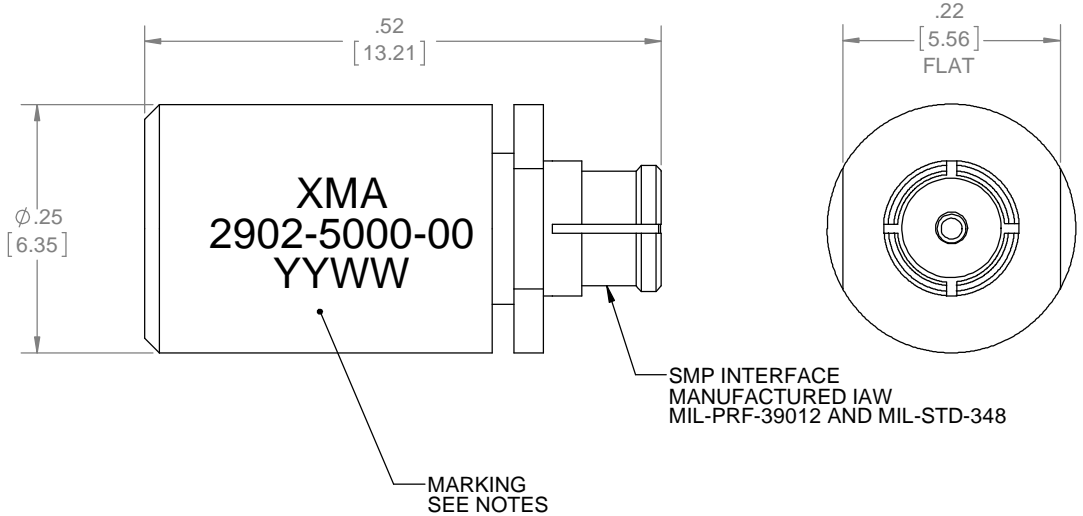
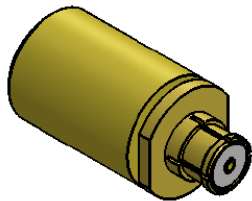
FINISH

CONNECTOR \_\_\_\_\_ GOLD PLATED BeCu  
 MAIN BODY \_\_\_\_\_ GOLD PLATED BRASS

RoHS Compliant Device

MARKING

PART LOOKS LIKE PRODUCT IMAGE ABOVE.  
 PART MARKING ORIENTATION AND FORMAT AS SHOWN.  
 MARKING TO BE AS LARGE AS POSSIBLE BE, CLEAR, READABLE.  
 YYWW EQUALS DATE CODE



REVISIONS				
REV	DESCRIPTION	ECO #	DATE	APPROVED
-	RELEASED	13-301	12/11/13	T.KUHN
A	ADDED MARKING	15-277	9/21/15	T.KUHN

QTY	PART NUMBER	DESCRIPTION	ITEM NO
X	2092-5000-00	TERMINATION, SMP-f	
1	TA-2092-5000-00-dBU	TERMINATION, SMP-f, UNMARKED	1

DRAWING PRACTICES PER ANSI-Y-14.5 MIL-STD-100 & 1000	
DIMENSIONS ARE IN INCHES AND APPLY BEFORE / AFTER PROCESSING	
SURFACE ROUGHNESS	63
FINISH:	
SEE NOTE	
MATERIAL:	
SEE NOTE	
NOTE: THIS DRAWING INCORPORATES THIRD ANGLE PROJECTION.	
INTERPRET IAW ANSI Y14.5-1982	

UNLESS OTHERWISE SPECIFIED TOLERANCES IN:	
DECIMALS	INCH [MM]
.X"	.05" [1.27]
.XX"	.03" [.76]
.XXX"	.010" [.25]
ANGLES ±0°30'	
REMOVE ALL BURRS/SHARP W/ BREAK / R OF .003" TO .0005" UNLESS OTHERWISE NOTED DIAS CONCENTRIC <.003 T.I.R.	
DO NOT SCALE PRINT	

DRAWN	DATE
BA	7/23/13
CHECKED	DATE
T.KUHN	11/27/13
ENG. APPR.	DATE
T.KUHN	11/27/13
THESE DRAWINGS AND SPECIFICATIONS ARE THE PROPERTY OF XMA CORP. OR OMNI SPECTRA AND SHALL NOT BE REPRODUCED, COPIED NOR USED - IN WHOLE OR IN PART - AS A BASIS FOR THE MANUFACTURE OR SALE OF OTHER ITEMS WITHOUT THE EXPRESS WRITTEN PERMISSION OF XMA CORP.	

Phone: 603-222-2256 Fax: 603-222-2259  
 150 Dow Street, Manchester, NH 03101

TITLE			
TERMINATION, SMP-f			
SIZE	CAGE CODE	DRAWING NUMBER	REV
B	3HT76	2902-5000-00	A
SCALE	PLATED AREA SQ. IN	SHEET 1 OF 1	