

5

4

3

2

1

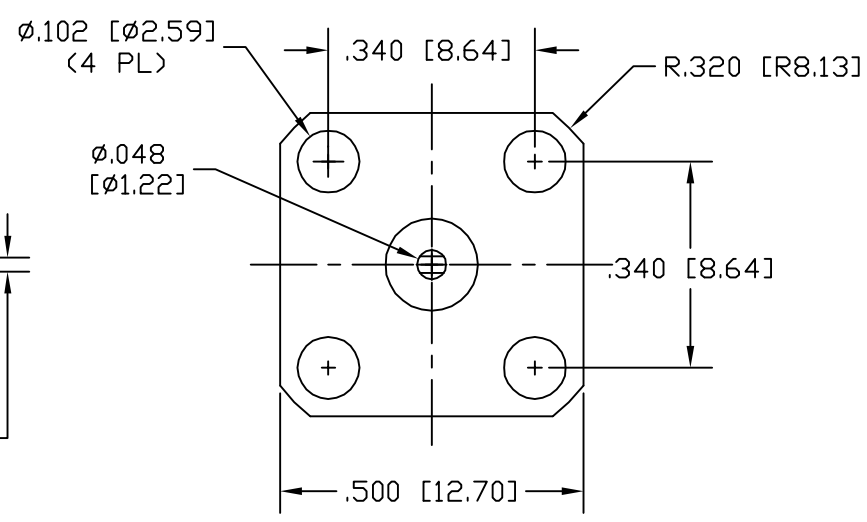
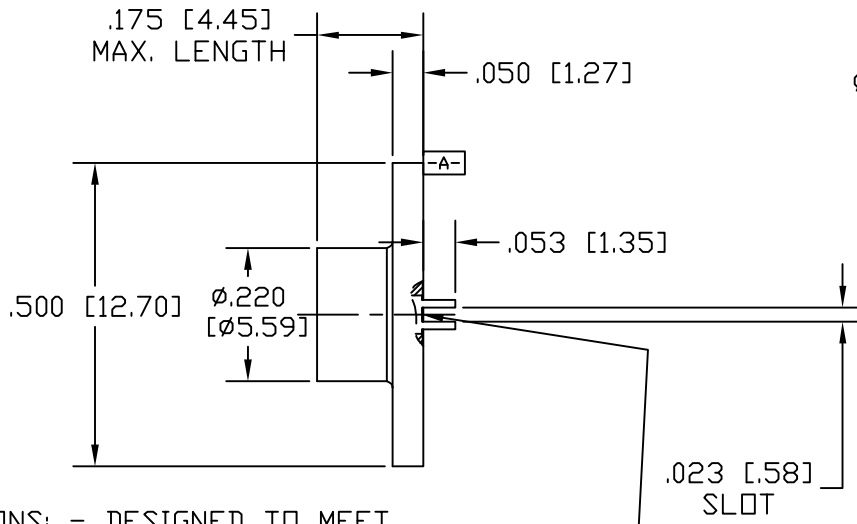
MATERIALS AND PLATINGS SELECTED TO REDUCE 3rd ORDER INTERMODULATION CONTRIBUTED BY THIS TERMINATION TO TYPICALLY BETTER THAN 120 dBc TO 150 dBc POSSIBLE

PRODUCTION RELEASE

NOTE:
THIS DRAWING INCORPORATES
THIRD ANGLE PROJECTION
INTERPRET IAW ANSI Y14.5-1982

REVISIONS

| LTR | DESCRIPTION | DATE | APPROVED |
|-----|---------------------|------------|-------------|
| A | REVISED VSWR ISSUED | 01/14/2011 | D. Saunders |



SPECIFICATIONS: - DESIGNED TO MEET ENVIRONMENTALS IAW MIL-DTL-3933

>HOUSING IS ROHS BRASS, WHITE BRONZE (aka TRI-ALLOY OR ALBALLOY) PLATED

>CONTACT IS ROHS BRASS OR BECU, GOLD PLATED
>DIELECTRIC IS TEFLON/AIR COMPOSITE - EPOXY CAPTIVATED

>RESISTOR IS PROTECTED PROPRIETARY THIN FILM VALUE: 50Ω ±5%

>POWER 1 WATT AVG./RMS FROM -55°C TO +60°C CASE TEMP - DERATES TO 10% @ 150°C

>PEAK POWER MAX 100 WATTS, 100μSec PW, 0.1% DUTY CYCLE OR 500 WATTS, 10μSec PW, 0.1% DC

BOTTOM OF SLOT SHALL BE BELOW THE FLANGE FACE -A-
>SOLDER RESIDUE (ROHS) MAY BE VISIBLE IN SLOT, BOTTOM DOES NOT AFFECT ATTACHMENT TO CIRCUIT TERMINALS

VSWR (MAX.)

| | |
|-------------|------|
| DC-4 GHz | 1.10 |
| 4-12 GHz | 1.20 |
| 12-18 GHz | 1.30 |
| 18-26.5 GHz | 1.45 |

| | |
|--|-----------|
| DRAWING PRACTICES PER ANSI-Y-14.5 MIL-STD-100 & 1000 | |
| DIMENSIONS ARE IN INCHES AND APPLY BEFORE/AFTER PROCESSING | ✓ |
| SURFACE ROUGHNESS INCHES | ✓ |
| FINISH | SEE NOTES |
| MATERIAL | SEE NOTES |

| | | |
|---|-------|-------|
| UNLESS OTHERWISE SPECIFIED TOLERANCES IN: | | |
| DECIMALS | INCH | DIM |
| .X" | .03" | [.76] |
| .XX" | .020" | [.51] |
| .XXX" | .010" | [.25] |
| .XXXX" | | |
| ANGLES | ± | |
| UNLESS OTHERWISE NOTED DIAS CONCENTRIC <.003 T.I.R. | | |

| | |
|--|------|
| DRAWN | DATE |
| M. TURNER | |
| CHECKED | DATE |
| ENGINEER APPR. | DATE |
| THESE DRAWINGS AND SPECIFICATIONS ARE THE PROPERTY OF XMA CORP. OR OMNI SPECTRA AND SHALL NOT BE REPRODUCED, COPIED NOR USED - IN WHOLE OR IN PART - AS A BASIS FOR THE MANUFACTURE OR SALE OF OTHER ITEMS WITHOUT THE EXPRESS WRITTEN PERMISSION OF XMA CORP. | |

XMA Powered by: Omni Spectra®
Phone:603-222-2256 Fax:603-222-2259
150 Dow Street, Manchester, NH 03101

TITLE
UNMARKED - SMA FLANGE COAXIAL TERMINATION

| | | |
|-------|-----------|----------------|
| SIZE | CAGE CODE | DRAWING NUMBER |
| B | 3HT76 | 2768-5123-21-U |
| SCALE | 5:1 | SHEET 1 OF 1 |

5

4

3

2

1

BCSI