

5

4

3

2

1

SPECIFICATIONS

ELECTRICAL

FREQUENCY RANGE _____ DC - 6 GHz

INSERTION LOSS:

0	± 0.3 dB
1-20 dB	± 0.5 dB
25 & 30 dB	±0.75 dB

VSWR

DC TO 2.5 GHz	1.15:1 MAX
2.5 TO 6.0 GHz	
0-6dB	1.20:1
7-12dB	1.25:1
13-20dB	1.30:1
25 & 30dB	1.35:1

INPUT POWER _____ 2 WATTS AVG. @ 25°C
DERATES LINEARLY TO 10% @ 125°C FROM 25°C

PEAK POWER _____ 200 WATTS
(5µSec PULSE WIDTH, 0.01% DUTY CYCLE)

IMPEDANCE _____ 50 OHMS

OPERATING TEMP RANGE _____ -65°C TO +125°C

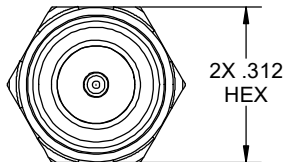
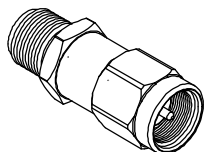
CONFORMANCE TESTING IS 100% ATTENUATION AND V.S.W.R.
ACROSS FULL, FREQUENCY RANGE AT 20-25°C

MECHANICAL

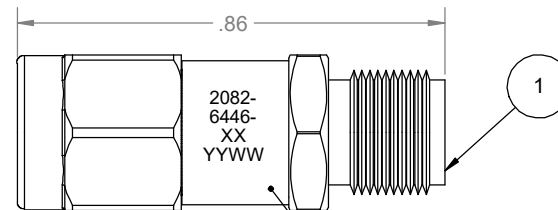
CONNECTOR BODIES	PASSIVATED STAINLESS STEEL
CENTER CONDUCTORS	GOLD PLATED BERYLLIUM COPPER
INSULATORS	PTFE (TEFLON) IAW ASTM-D1710
RESISTIVE ELEMENT	THIN FILM ON CERAMIC RESISTIVE CIRCUIT
NOT A HERMETIC SEALED UNIT	
RECOMMENDED MATING TORQUE IS 7-8 in./Lbs. (0.8 to 0.9 Nm)	
RoHS COMPLIANT DEVICE	

MARKING

PART LOOKS LIKE PRODUCT IMAGE ABOVE.
PART MARKING ORIENTATION AND FORMAT AS SHOWN.
REPLACE XX WITH APPROPRIATE TWO DIGIT dB VALUE SPECIFIED
ON WORK ORDER.
MARKING TO BE AS LARGE AS POSSIBLE, CLEAR, READABLE.
YYWW EQUALS DATE CODE.

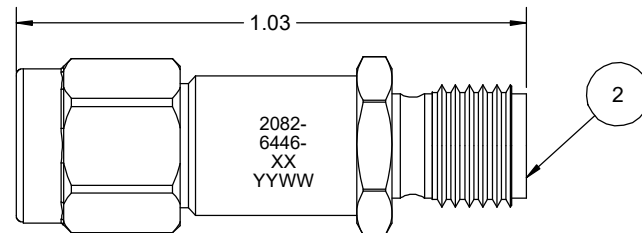


REVISIONS				
REV	DESCRIPTION	ECO #	DATE	APPROVED
C	REDRAWN IN SOLIDWORKS	14-296	8/20/14	T.KUHN
D	ADDED LONGER 30 dB VERSION	18-027	3/21/18	T.KUHN
E	CHANGED TA P/N FOR 30 dB IN BOM	18-101	7/5/18	T.KUHN
F	ADDED 13-30 dB LONGER VERSION	18-152	10/9/18	T.KUHN



MARKING AREA
SEE NOTES

0-12 dB ONLY



13-30 dB ONLY

QTY. 0-12dB	QTY. 13-30dB	PART NUMBER	DESCRIPTION	ITEM NO.
X	X	2082-6446-dB	ATTENUATOR, SMA-m/f, DC -6 GHz, 2 WATT	
1	-	TA-2082-6446-dBU	ASSY, ATTENUATOR, SMA-m/f, DC -6 GHz, 2 WATT, UNMARKED	1
-	1	TA-2082-6400-dBCU	ASSY, ATTENUATOR, SMA-m/f, DC -6 GHz, 2 WATT, UNMARKED	2

DRAWING PRACTICES PER ANSI-Y-14.5 MIL-STD-100 & 1000	
DIMENSIONS ARE IN INCHES AND APPLY BEFORE / AFTER PROCESSING	
SURFACE ROUGHNESS	63
FINISH:	
SEE NOTE	
MATERIAL:	
SEE NOTE	
NOTE: THIS DRAWING INCORPORATES THIRD ANGLE PROJECTION.	
	INTERPRET IAW ANSI Y14.5-1982

UNLESS OTHERWISE SPECIFIED TOLERANCES IN:	
DECIMALS	INCH (MM)
.X"	.05" [1.27]
.XX"	.03" [.76]
.XXX"	.010" [.25]
ANGLES ±0°30'	
REMOVE ALL BURRS/SHARP W/ BREAK / R OF .003" TO .0005" UNLESS OTHERWISE NOTED DIAS CONCENTRIC <.003 T.I.R.	
DO NOT SCALE PRINT	

DRAWN	DATE
SAUNDERS	1/1/07
CHECKED	DATE
	1/1/07
ENG. APPR.	DATE
SAUNDERS	
THESE DRAWINGS AND SPECIFICATIONS ARE THE PROPERTY OF XMA CORP. OR OMNI SPECTRA AND SHALL NOT BE REPRODUCED, COPIED NOR USED - IN WHOLE OR IN PART - AS A BASIS FOR THE MANUFACTURE OR SALE OF OTHER ITEMS WITHOUT THE EXPRESS WRITTEN PERMISSION OF XMA CORP.	

Phone: 603-222-2256 Fax: 603-222-2259
150 Dow Street, Manchester, NH 03101

TITLE
ATTENUATOR, SMA-m/f, DC -6 GHz, 2 WATT

SIZE	CAGE CODE	DRAWING NUMBER	REV
B	3HT76	2082-6446-dB	F
SCALE	PLATED AREA SQ. IN	SHEET 1 OF 1	

5

4

3

2

1