

SPECIFICATIONS

ELECTRICAL

VSWR (MAX.)	
DC-4 GHz	1.10
4- 12 GHz	1.25
12-18 GHz	1.40

POWER \_\_\_\_\_ 10 WATT AVG.  
RMS FROM -55°C TO +60°C  
CASE TEMP  
DERATES TO 10% @ 150°C

PEAK POWER MAX \_\_\_\_\_ 100 WATTS, 100mSec PW,  
0.1% DUTY CYCLE OR 500 WATTS,  
10mSec PW, 0.1% DC

MECHANICAL

DESIGNED TO MEET ENVIRONMENTALS IAW MIL-DTL-3933

HOUSING \_\_\_\_\_ ROHS BRASS, WHITE BRONZE (AKA TRI-ALLOY  
OR ALBALLOY) PLATED

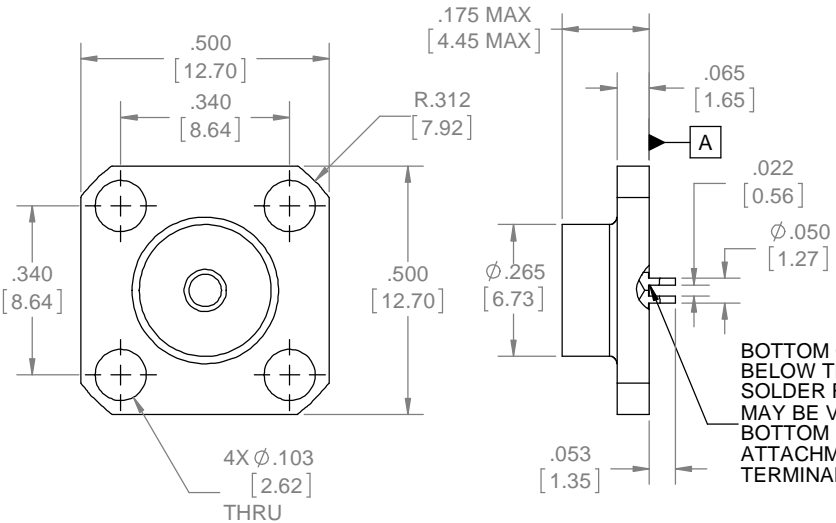
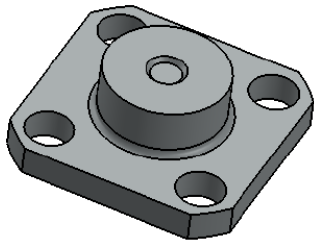
CONTACT \_\_\_\_\_ ROHS BRASS OR BECU, GOLD PLATED

DIELECTRIC \_\_\_\_\_ TEFLON/AIR COMPOSITE - EPOXY CAPTIVATED

RESISTOR IS PROTECTED PROPRIETARY THIN FILM VALUE: 50Ω ±5%

MARKING

NONE.



REVISIONS				
REV	DESCRIPTION	ECO #	DATE	APPROVED
B	REDRAWN IN SOLIDWORKS	14-252	7/1/14	T.KUHN

QTY	PART NUMBER	DESCRIPTION	ITEM NO.
1	TA-2068-7002-21	TERMINATION, SMA, FLANGED, DC-18GHz, 10 WATT, 100 WATTS PEAK	1

DRAWING PRACTICES PER ANSI-Y-14.5 MIL-STD-100 & 1000	
DIMENSIONS ARE IN INCHES AND APPLY BEFORE / AFTER PROCESSING	
SURFACE ROUGHNESS	63
FINISH:	
SEE NOTES	
MATERIAL:	
SEE NOTES	
NOTE: THIS DRAWING INCORPORATES THIRD ANGLE PROJECTION.	
INTERPRET IAW ANSI Y14.5-1982	

UNLESS OTHERWISE SPECIFIED TOLERANCES IN:	
DECIMALS	INCH (MM)
.X"	.05" [1.27]
.XX"	.03" [.76]
.XXX"	.010" [.25]
ANGLES ±0°30'	
REMOVE ALL BURRS/SHARP W/ BREAK / R OF .003" TO .0005" UNLESS OTHERWISE NOTED DIAS CONCENTRIC <.003 T.I.R.	
DO NOT SCALE PRINT	

DRAWN	DATE
M.TURNER	
CHECKED	DATE
ENG. APPR.	DATE
THESE DRAWINGS AND SPECIFICATIONS ARE THE PROPERTY OF XMA CORP. OR OMNI SPECTRA AND SHALL NOT BE REPRODUCED, COPIED NOR USED - IN WHOLE OR IN PART - AS A BASIS FOR THE MANUFACTURE OR SALE OF OTHER ITEMS WITHOUT THE EXPRESS WRITTEN PERMISSION OF XMA CORP.	

Phone: 603-222-2256 Fax: 603-222-2259  
150 Dow Street, Manchester, NH 03101

TITLE

**TERMINATION, SMA, FLANGED, DC-18GHz, 10 WATT, 100 WATTS PEAK, UNMARKED**

SIZE	CAGE CODE	DRAWING NUMBER	REV
B	3HT76	2068-7002-21	B
SCALE	PLATED AREA SQ. IN	SHEET 1 OF 1	