

**SPECIFICATIONS**

**ELECTRICAL:**

FREQUENCY RANGE \_\_\_\_\_ 7 kHz - 23 GHz

IMPEDANCE \_\_\_\_\_ 50 OHMS

**INSERTION LOSS**

100 kHz - 12.4 GHz \_\_\_\_\_ ±0.50 dB

12.4 - 23 GHz \_\_\_\_\_ ±0.75 dB

BETTER THAN -3 dB BANDWIDTH 7 kHz- 23 GHz

**VSWR**

7 kHz - 23 GHz \_\_\_\_\_ 1.35:1 MAX.

VOLTAGE RATING \_\_\_\_\_ 100 VOLTS MAX. (INNER ONLY)

POWER (AVG) \_\_\_\_\_ 2 WATTS  
POWER DERATES LINEARLY FROM +25°C TO <10% @ +125°C

OPERATING TEMP \_\_\_\_\_ -65°C TO 125°C

**MECHANICAL**

HOUSING \_\_\_\_\_ PASSIVATED STAINLESS STEEL

CONNECTORS \_\_\_\_\_ PASSIVATED STAINLESS STEEL

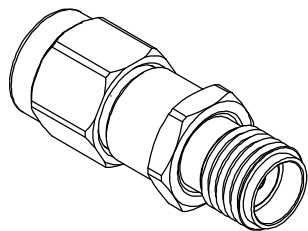
CONTACTS \_\_\_\_\_ GOLD PLATED BERYLLIUM COPPER

CONNECTOR INTERFACES, FINISHES AND MATERIALS COMPLY WITH BOTH MIL-PRF-39012 AND MIL-STD-348.

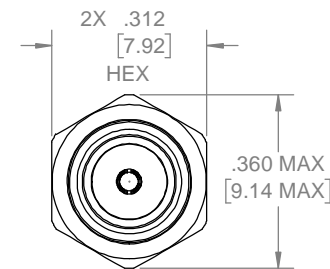
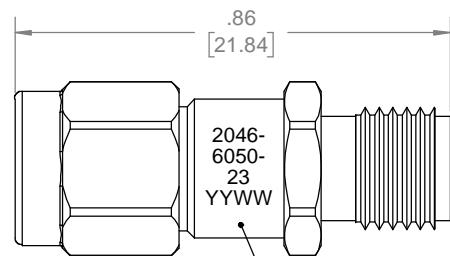
**RoHS COMPLIANT DEVICE**

**MARKING**

PART LOOKS LIKE PRODUCT IMAGE ABOVE.  
PART MARKING ORIENTATION AND FORMAT AS SHOWN.  
MARKING TO BE AS LARGE AS POSSIBLE, CLEAR, AND READABLE.  
YYWW EQUALS DATE CODE



REVISIONS				
REV	DESCRIPTION	ECO #	DATE	APPROVED
A	ADDED MARKING TO DRAWING	14-303	8/27/14	T.KUHN
B	CORRECTED TITLE & MARKING	15-014	11/16/15	T.KUHN
C	ADDED RoHS COMPLIANT STATEMENT	17-156	10/11/17	T.KUHN



MARKING AREA

QTY.	PART NUMBER	DESCRIPTION	ITEM NO.
X	2046-6050-23	DC BLOCK, SMA-m/f, 7kHz - 23GHz, 2W	
1	TA-2046-6050-23U	ASSY, DC BLOCK, SMA-m/f, 7kHz - 23GHz, 2W, UNMARKED	1

DRAWING PRACTICES PER ANSI-Y-14.5 MIL-STD-100 & 1000	
DIMENSIONS ARE IN INCHES AND APPLY BEFORE / AFTER PROCESSING	
SURFACE ROUGHNESS	63
FINISH:	
SEE NOTES	
MATERIAL:	
SEE NOTES	
NOTE: THIS DRAWING INCORPORATES THIRD ANGLE PROJECTION.	
INTERPRET IAW ANSI Y14.5-1982	

UNLESS OTHERWISE SPECIFIED TOLERANCES IN:	
DECIMALS	INCH [MM]
.X"	.05" [1.27]
.XX"	.03" [.76]
.XXX"	.010" [.25]
ANGLES ±0°30'	
REMOVE ALL BURRS/SHARP W/ BREAK / R OF .003" TO .0005" UNLESS OTHERWISE NOTED DIAS CONCENTRIC <.003 T.I.R.	
DO NOT SCALE PRINT	

DRAWN	DATE
MCCORMICK	
CHECKED	DATE
MCCORMICK	8/27/14
ENG. APPR.	DATE
T.KUHN	
THESE DRAWINGS AND SPECIFICATIONS ARE THE PROPERTY OF XMA CORP. OR OMNI SPECTRA AND SHALL NOT BE REPRODUCED, COPIED NOR USED - IN WHOLE OR IN PART - AS A BASIS FOR THE MANUFACTURE OR SALE OF OTHER ITEMS WITHOUT THE EXPRESS WRITTEN PERMISSION OF XMA CORP.	

Phone: 603-222-2256 Fax: 603-222-2259  
150 Dow Street, Manchester, NH 03101

TITLE

**DC BLOCK, SMA-m/f, 7kHz - 23GHz, 2W**

SIZE	CAGE CODE	DRAWING NUMBER	REV
B	3HT76	2046-6050-23	C
SCALE	PLATED AREA SQ. IN	SHEET 1 OF 1	