

4

3

2

1

SPECIFICATIONS

ELECTRICAL

FREQUENCY RANGE _____ DC - 18 GHz

VSWR

DC - 4 GHz	1.05
4 - 8 GHz	1.10
8 - 12.4 GHz	1.15
12.4 - 18 GHz	1.20

IMPEDANCE _____ 50 OHMS

TEMPERATURE RANGE (°C) _____ -55 TO +125

POWER (AVG) _____ 2 WATTS
POWER DERATES LINEARLY FROM +45°C TO <10% @+125°CPOWER (PEAK) _____ 500 WATTS
(<5 µ SEC PW, <1% DUTY CYCLE)

MECHANICAL

INNER CONDUCTOR: _____ BERYLLIUM COPPER PER
ASTM B196 & B197.OUTER CONDUCTOR: _____ STEEL, CORROSION RESISTANT PER
ASTM A484 & A582, CLASS 303, COND. A.

DIELECTRIC: TEFLON PER ASTM D1710.

FINISH

INNER CONDUCTOR: _____ GOLD PLATED PER MIL-PRF-39012.

HOUSING/COUPLING NUT FINISH PER SUFFIX (REPLACING -0X IN P/N)

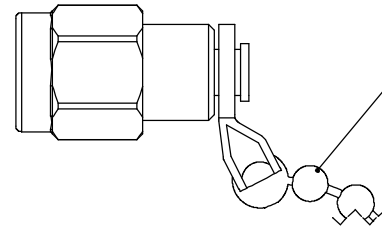
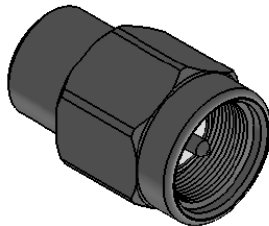
- 00 OUTER CONDUCTOR/NUT GOLD PLATED
- 02 OUTER CONDUCTOR/NUT PASSIVATED SS
- 01 OUTER CONDUCTOR GOLD PLATED, NUT PASSIVATED SS

ADD C25 FOR 2-2.5" CHAIN ATTACHED

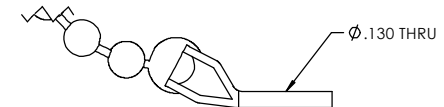
CONNECTOR INTERFACE COMPLIES WITH MIL-PRF-39012 AND MIL-STD-348
FOR SMA MATING CHARACTERISTICS.

MARKING

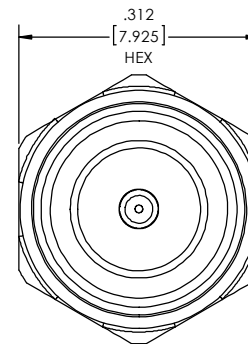
PART LOOKS LIKE PRODUCT IMAGE ABOVE.
PART MARKING ORIENTATION AND FORMAT AS SHOWN.
MARKING TO BE AS LARGE AS POSSIBLE, CLEAR, READABLE, AND A BLACK COLOR.
REPLACE XX WITH APPROPRIATE HOUSING/COUPLING NUT FINISH ON WORK ORDER.
YYWW EQUALS DATE CODE.



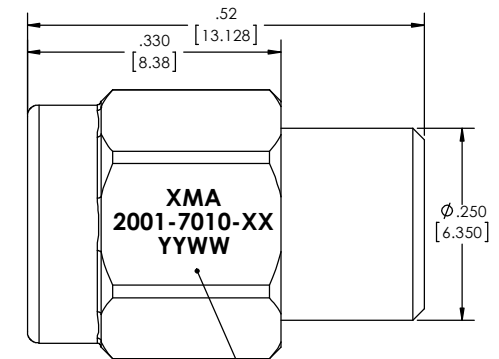
SHOWN WITH OPTIONAL
#3 BEAD CHAIN STOCK
SS/INCONEL MATERIAL
2" - 2.5" LONG
(SEE NOTE)



Ø .130 THRU



.312
[7.925]
HEX



MARKING AREA
SEE NOTE

QTY.	PART NUMBER	DESCRIPTION	ITEM NO.
X	2001-7010-0X	TERMINATION, SMA, MALE, DC-18GHz, 2 WATTS AVG., 500 WATTS PEAK	
1	2001-7000-0XBB	ASSEMBLY, TERMINATION, SMA, MALE, DC-18GHz, 2 WATTS AVG., 500 WATTS PEAK UNMARKED	1

DRAWING PRACTICES PER ANSI Y14.5 DIMENSIONS ARE IN INCHES AND APPLY BEFORE/AFTER PROCESSING	
SURFACE ROUGHNESS INCHES	63
FINISH:	SEE NOTES
MATERIAL:	SEE NOTES
NOTE:	THIS DRAWING INCORPORATES THIRD ANGLE PROJECTION.
INTERPRET IAW ANSI Y14.5-1982	

UNLESS OTHERWISE SPECIFIED TOLERANCES IN:	
DECIMALS	INCH (MM)
.X"	.05" [1.27]
.XX"	.03" [.76]
.XXX"	.010" [.25]
ANGLES ±0°30' REMOVE ALL BURRS/SHARP W/ BREAK / R OF .003" TO .0005" UNLESS OTHERWISE NOTED DIAS CONCENTRIC <.003 T.I.R.	
DO NOT SCALE PRINT	

DRAWN MCCORMICK	DATE 7/8/14
CHECKED MCCORMICK	DATE 7/8/14
ENG APPR. T.KUHN	DATE 7/8/14
THESE DRAWINGS AND SPECIFICATIONS ARE THE PROPERTY OF XMA CORP. OR OMNI SPECTRA AND SHALL NOT BE REPRODUCED COPIED NOR USED IN WHOLE OR IN PART AS A BASIS FOR THE MANUFACTURE OR SALE OF OTHER ITEMS WITHOUT THE EXPRESS WRITTEN PERMISSION OF XMA CORP.	

XMA Omni Spectra [®]				Phone: 603-222-2256 Fax: 603-222-2259 150 Dow Street, Manchester, NH 03101	
TITLE					
TERMINATION, SMA, MALE, DC-18GHz, 2 WATTS AVG., 500 WATTS PEAK					
SIZE C	CAGE CODE 3HT76		DRAWING NUMBER 2001-7010-0X		REV C
SCALE	PLATED AREA 50. IN		SHEET 1 OF 1		